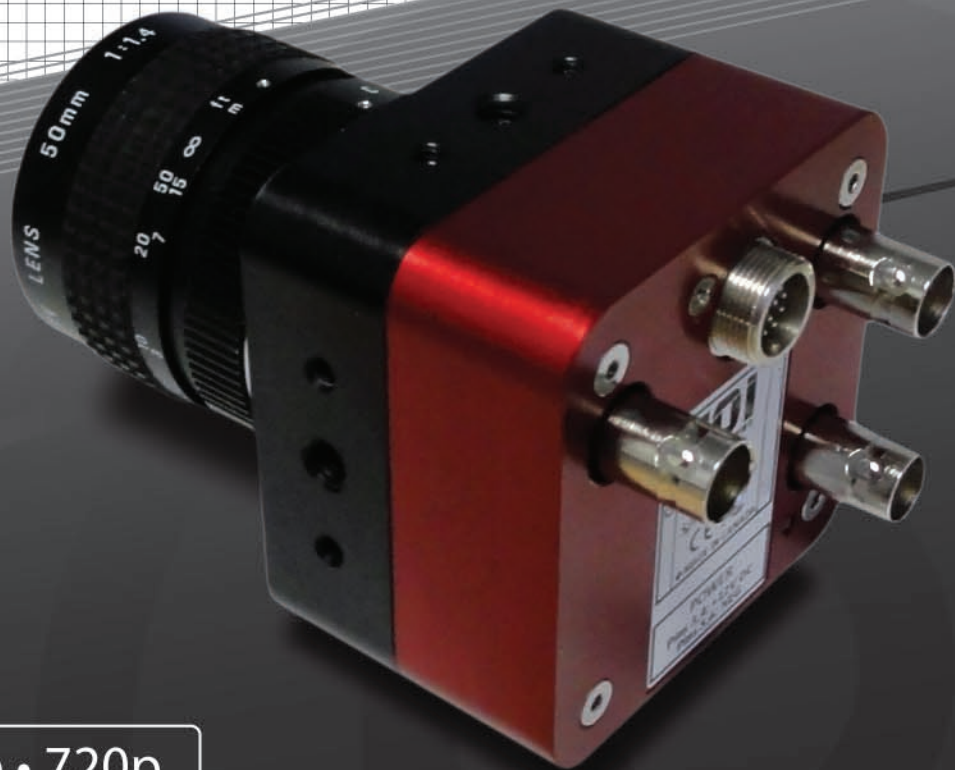
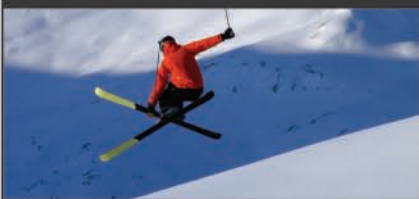


# Flare™ 2KSDI



2K • 1080p • 720p



## Features

- Compact one-piece rugged color camera
- Dual outputs for high speed CXP mode
- SYNC IN for 3D and genlock capability
- YCbCr, XYZ and RAW color modes
- Low noise and high light sensitivity
- Auto-exposure and auto white balance
- Adjustable color matrix, saturation, and gamma

## Applications

- Broadcast and cinema
- Recording on vehicles and aircraft
- Medical
- Security

**IOI**  
IO INDUSTRIES

# Specifications

## Camera Specifications

Features		Output Modes
Sensor Size (H x V)	2048 x 1088 pixels	Single Link HD-SDI: <ul style="list-style-type: none"> <li>• 720p 10bit 4:2:2: 50, 59.94, 60</li> <li>• 1080p 10bit 4:2:2: 23.98, 24, 25, 29.97, 30</li> </ul> Single Link 3G-SDI: <ul style="list-style-type: none"> <li>• 1080p 10bit 4:2:2: 50, 59.94, 60</li> <li>• 2K 12bit 4:4:4: 24</li> </ul> CXP Mode (OPTIONAL): <ul style="list-style-type: none"> <li>• Runs CoaXPress firmware</li> <li>• See datasheet "Flare 2M280CCX"</li> </ul> For other modes please contact IO Industries.
Maximum Frame Rate	60 fps at 1080p, 283 fps in CXP mode	
Sensor Details	2/3", 60 dB CMOS, 5.5 x 5.5 μm pixels	
Shutter	Pipelined Global Shutter with Correlated Double Sampling	
Image Type	4:2:2(Y'Cb'Cr'), 4:4:4(X'Y'Z'), or RAW (Bayer)	
Pixel Format	10-bit or 12-bit	
Data Output Type (Interface)	3G/HDSDI Single or Dual Link	
White Balance	Automatic (AWB), Tracking AWB, or manually adjustable	
Color Adjustment	Color Matrix, Saturation	
Black/White Adjustment	Master Pedestal, Black Gamma, Knee Point	
Camera Control	Wired Remote or RS-485 (USB adapter available)	
Synchronization	External Tri-Level SYNC IN	
Exposure Control	Automatic (AEC) or manually adjustable	

## Mechanical / Electrical Specifications

Housing Size	63.5 x 63.5 x 44.1 mm
Ambient Temperature	Up to 50°C
Lens Mount	C- Mount or T-Mount
Ports	(2) SDI, (1) SYNC IN, (1) 12-pin Hirose
Power Requirements	12 VDC (via Hirose)
Power Consumption	4.5 W
Weight	310 g

